

# Designing the new



David Lee is Chief Designer for Motorhomes International. On 18 January 1980 in a presentation to 600 sales and management personnel of the VW dealer network he outlined some of the design problems encountered on the 1980 VW Transporter.

Over the past few years there has been considerable legislation affecting the design of passenger carrying vehicles. Soon, motorcaravans too will have to conform to these very stringent regulations. All forward facing seats will have to be fitted with safety belts. The strength of anchorage points, the rigidity of body shells after conversion are now, as never before, matters of concern to designer of motorcaravans. The new VW Transporter has its own special design problems.



To begin with, there are two strengthening ribs in the roof panel which are welded to vertical pillars; if these are cut or removed the strength of the body shell and the safety of passengers will be impaired.

To create the necessary standing space we are allowed to cut away the roof panel between these ribs (fig 1) and all three VW approved converters, Devon, Danbury and Motorhomes International have done this. Incidentally, all three converters have also adopted a side hinged roof shell which is the full length and width of the vehicle, and all three have fully cushioned roof beds. The three differ only in the

manner in which they provide the sleeping accommodation within the roof space.

The Devon (fig 2) has two small beds to the front and rear of the roof opening. Measuring about 36" X 46". They are suitable only for two small children. A double bed is possible (fig 3) by sliding the back bed forward to make one big bed measuring 72" X 46". Access to it is via a second "hole" in the roof, shaded yellow, which is directly above the ground floor double bed. It is a matter of some inconvenience that one reaches the upper bed only by putting at risk the credentials of anyone occupying the bed below. And, of course, the upper bed now seals off the standing area, so at night one must crouch at all times.

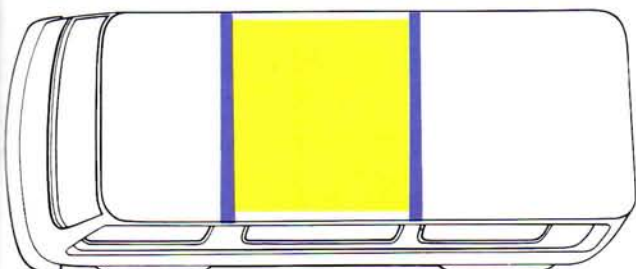
The Danbury has a double bed at the back end of the roof system. When fully extended to its maximum length of 72" it seals off all but 14" of the original roof opening.

The problem which must now be apparent, can only be solved using the Spacemaker system of 'overhang' (fig 4). Beds are extended out over each side. As a result, there's space for four adults using one double and two singles with storage space to spare, and NO INTRUSION of the normal standing area. Four adults in the Spacemaker, two in the Devon and Danbury. One hundred percent more space. And that is the measure by which Spacemaker leads in design know-how.

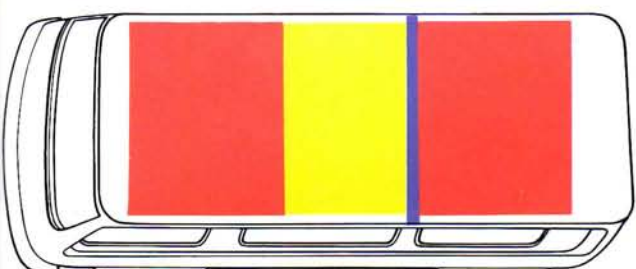
In Germany, France, Holland, Belgium, Switzerland and Britain the Spacemaker system is gaining ground against its competition. Eight factories, three hundred and twenty craftsmen, all dedicated to producing the most innovative leisure vehicles in Europe. Last year, at the Paris Fair, Motorhomes International were awarded the Medal of Merit for excellence in workmanship - an award which was gained in competition with all major European manufacturers, including Devon Conversion, C.I. Autohomes, Autosleeper and Westfalia.



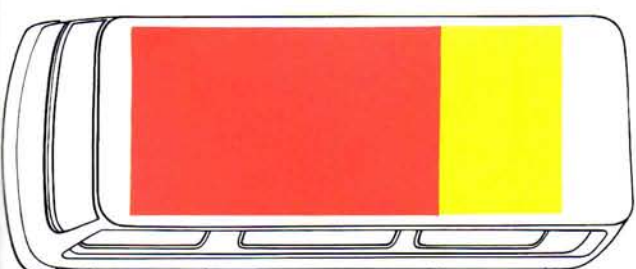
# Transporter



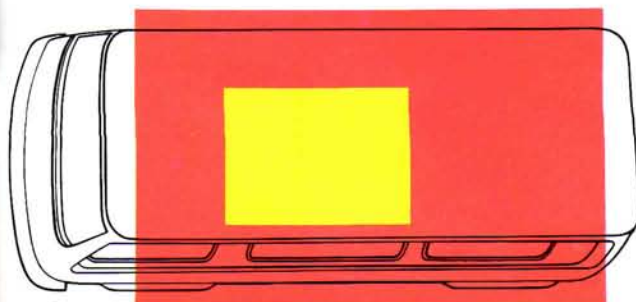
1



2



3



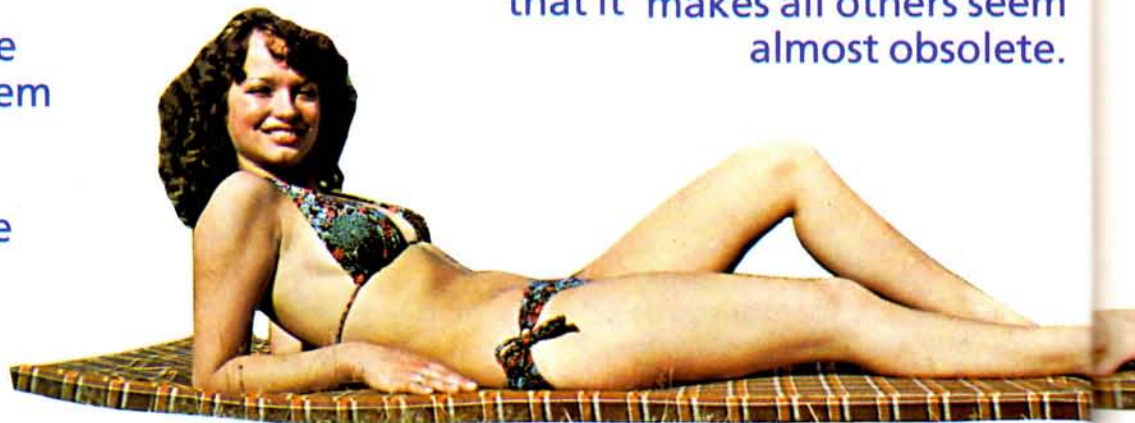
4



# XPLORER on the road

The Spacemaker roof has two other design features which are not available on other Volkswagen motorcaravans; a rugged all-steel roof rack for your extra holiday luggage, styled to enhance the sweeping good looks of the VW Transporter; and mattresses for the roof beds which are removable - use them inside for a good night's sleep, use them outside in the sunshine too.

Ideas in action from Spacemaker! And every roof is hand sealed and water tested to ensure its total reliability. Space, style and quality in a system so far advanced that it makes all others seem almost obsolete.



And now. The Xplorer conversion. It's sad to relate that the general format is much the same as the new Devon Moonraker and the Danbury. Kitchen units are arranged down the offside, hanging wardrobe in the rear corner, and a forward facing bench seat across the back which makes into a big double bed. It's not that we're lost for ideas, simply that the opening in the roof panel determines the ground floor plan.

# ew Transporter

We've taken this basic format and given it the touch of Spacemaker magic! The magic of swivel cab seats and a separate dinette for two children. The magic of an indoor-outdoor galley and a Trumatic space heater for those cold winter nights - ventilated through the floor for total comfort and safety. A second dinette for four and a 240v mains electric system with a built-in battery charging facility. Just inside the sliding side door is a rearward facing fold back seat. Fold back, because at times you'll need the extra floor space for humping big loads. And the double bed? It's a giant 6' 5" long, 4' wide. Cloth upholstery and a deep pile carpet complete the magic touch.



Seats six, sleeps six, and in comfort too. The Xplorer is in the words of Alan Ryalls "an outstanding design; by far and away the most successful ever on a Volkswagen."

# the **XPLORER**

Xplorerloo. Another word for total convenience, total freedom. The freedom to go when you want, where-ever you want. It stores, unobtrusively, under the foldback seat. And it comes with its own little tent which hangs from the roof rack - no poles, and no tent frame.

Just a neat little self contained package which takes about 10 seconds to erect. Magic!

From Volkswagen a new light van. From Motorhomes International a new conversion, Each in its way a major advance in design and



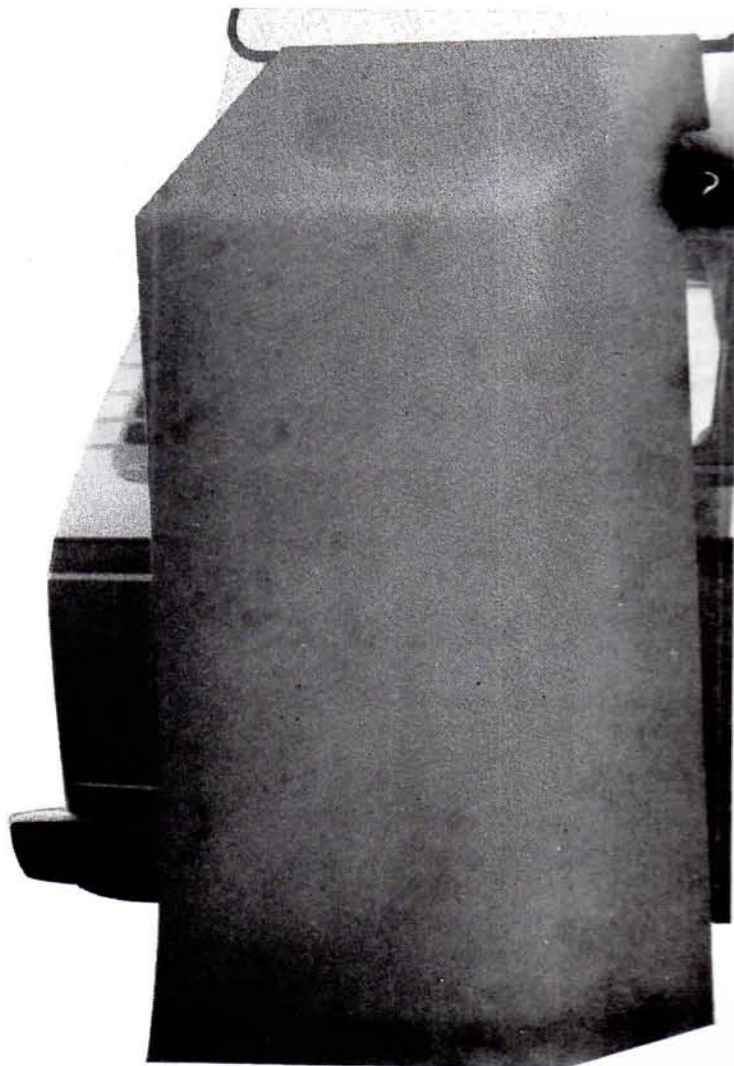
..... **LOO**

engineering excellence;  
together setting new standards  
by which all others must  
now be measured. V.W. Xplorer,  
one of the great motorcaravans of  
our time.



**MOTORHOMES INTERNATIONAL**

Telephone Leighton Buzzard(STD 0525) 376666



# selected **KPLORER** dealers

## Bedfordshire

Hooker & Roberts Ltd., Grove Place,  
Bedford (0234) 51431

## Berkshire

Normans of Maidenhead, Maidenhead  
Bridge, Maidenhead (0628) 22373

## Cambridgeshire

Boroughbury Garage Ltd., Oxney Road,  
Peterborough (0733) 60368,

## Cheshire

The Grosvenor Motor Co., Stonebridge  
Garage, Saughall Road, Chester (0244)  
377363

Earle Street Garage, 116 Earle Street,  
Crewe (0270) 587711

Howarth Motors (Grappenhall) Ltd.,  
101 Knutsford Road, Grappenhall,  
Warrington (0925) 65265

## Cleveland

Martins-Cartune (Volkswagen) Ltd.,  
Ormesby Road, Park End, Middlesborough  
(0642) 317971

## Cumbria

Cameron's Garage Ltd., 120/6 Rawlinson  
Street, Barrow-in-Furness (0229) 21245  
Hadwin Brothers (Lindale) Ltd., Lindale,  
Grange-over-Sands (044 84) 4242  
Parker & Parker Ltd., Longpool, Kendal  
(0539) 24331

## Derbyshire

International Cars of Alfreton, Hall  
Street, Alfreton (077 383) 2176  
Vogal Motors Ltd., 35 Ashbourne Road,  
Derby (0332) 31282  
Links Garage, 3 The Front, Fairfield,  
Buxton (0298) 2903

## Dorset

Stour Valley Motor Co. Ltd.,  
723 Wimbourne Road, Bournemouth  
(0202) 516222  
Loders Garage (Dorchester) Ltd., The  
Grove, Dorchester (0305) 67881

## Essex

Abridge Engineering Co. Ltd., Market  
Place, Abridge, Theydon Bois  
(849) 2722  
Service Garages (Colchester) Ltd.,  
Service House, East Hill, Colchester  
(0206) 77665

## Gloucestershire

North Street Motors Ltd., North Street,  
Cheltenham (0242) 514301

## Hampshire

Testwood Motors Ltd., Salisbury Road,  
Totton, Southampton (0703) 865727

Pooles (Volkswagen) Ltd.,  
41/53 Highland Road, Southsea,  
Portsmouth (0705) 815111

## Herefordshire

South Hereford Garages, Whitchurch,  
Ross-on-Wye (0600) 890235

## Hertfordshire

G. E. Harper Ltd., 137 High Street,  
Stevenage (0438) 54691  
Bowers Motor Co., 18 Bowers Parade,  
High Street, Harpenden (05827) 68669

## Lancashire

Westmorland Motors, Miry Lane,  
Wallgate, Wigan (0942) 41493,  
William Arnold Ltd., Ashton Old Road,  
061-273 4361  
Knibbs (Sale) Ltd., Cross Street, Sale,  
M33 1BU 061-973 3399

## Leicestershire

Arthur Prince of Loughborough,  
28 Market Street, Loughborough  
(0509) 217080

## Lincolnshire

Spittlegate Motors (Grantham) Ltd.,

Spittlegate Level, Grantham, Lincs.  
(0476) 66416

## London

Dovercourt Plaistow, 259 Plaistow Road,  
01-534 7661

Dovercourt St. John's Wood, Lord's  
Court, 32/34 St. John's Wood Road,  
01-286 8000

Colindale Service Station Ltd.,  
155/159 Edgware Road, Colindale  
01-205 0131

Normand (West London) Ltd.,  
131-137 Little Ealing Lane, Northfields.  
01-567 8862.

Service & Parts: Abbey Road, Park Royal,  
N.W.10. 01-965 7757

## Merseyside

Cheshire Brothers Ltd., 129 Mount Road  
051-608 6466

Peter Street Motors Ltd., 39-49 Liverpool  
Street, Salford 5, 061-833 0161 Tx 668677

Tom England & Sons Ltd., Moor Lane,  
Thornton 051-924 9186

Zetland Garage (Southport) Ltd.,  
Zetland Street, Southport (0704) 31091

## Northumberland

Peter Spellman Ltd., Spittal, Berwick-on-  
Tweed (0289) 7214

A. Carr & Son (Hexham) Ltd., Station  
Garage, Hexham (0434) 2179

## Nottinghamshire

Newbolds Garage (Mansfield) Ltd.,  
206 Chesterfield Road North, Mansfield  
(0623) 26272

## Oxfordshire

Broad Street Motors Ltd., 47 Broad Street,  
Banbury (0295) 51251

## Salop

Creamery Service Station, Stafford Street,  
Market Drayton (0630) 2393

Salopian Motors Ltd., Trench Road,  
Telford (0952) 605301

## Staffordshire

Bridge Motors (Dudley) Ltd., Burntree,  
Tipton, 021 520 1117

Brincars Ltd., Delta Way, Watling Street,  
Cannock (054 35) 6216

## Suffolk

Simpsons Garage (Lowestoft) Ltd.,  
Cooke Road, South Lowestoft Industrial  
Estate, Lowestoft (0502) 2583 3148

## Surrey

Drift Bridge Garage Ltd., Reigate Road,  
Epsom, Burgh Heath (25) 60111  
Colborne Garages Ltd., Portsmouth Road,  
Ripley (048 643) 2361  
Lockyear Motors Ltd., Ewhurst,  
Nr. Cranleigh. Ewhurst (048 633) 696

## Sussex

Davis & Stone Ltd., Longdean Avenue,  
Saltdean, Nr. Brighton (0273) 37571

## Sussex (West)

Whyke Motors Ltd., 51/4 Bognor Road,  
Chichester (0243) 87684  
West Sussex Motors Ltd.,  
58/62 Portland Road, Worthing  
(0903) 200820  
Service & Parts: Ivy Arch Road,  
Worthing (0903) 200272/36772

## Tyne & Wear

York Avenue Garage, Bensham Road,  
Gateshead (0632) 771291  
York Avenue Garage, Leam Lane, Jarrow  
(0632) 898441  
Benfield Motors Ltd., Brough Park  
Fossway, Newcastle-upon-Tyne  
(0632) 657121

## West Midlands

Listers of Coventry, Swanswell Garage,

Spon End, Coventry (0203) 56325

John Fitzpatrick Motors Ltd.,  
31 Stratford Road, Shirley, Solihull,  
021-745 5811

Jem Motor Services (Walsall) Ltd.,  
Pleck Road, Walsall (0922) 25561

## Yorkshire (North)

Massingberd Ltd., Ripon Road, Killinghall  
Harrogate (0423) 55141

North Riding Motors, Clarence Street,  
York (0904) 20408

## Yorkshire (South)

Listerdale Motor Co. Ltd., Bawtry Road,  
Wickersley (070 984) 3462

J. Gilder & Co. Ltd., 1 Ecclesall Road  
South, Banner Cross, Sheffield (0742)  
668441

Gilders (Hillsboro') Ltd., Waldot Service  
Station, Middlewood Road, Sheffield  
(0742) 348807

## Yorkshire (West)

Hebble Auto Services, Bradford Road,  
Huddersfield (0484) 42001

Trust Motors (Leeds) Ltd., Gelderd Road,  
Leeds (0532) 633431

Trust Motors (Bradford) Ltd.,  
Ingleby Road, Bradford (0274) 491414

Trust Motors (Bradford) Ltd.,  
Eccleshill Branch, Undercliffe Road,  
Eccleshill, Bradford (0274) 633511

G. Eric Hunt Ltd., Leeds Road,  
Otley (094 34) 3361/2 & 2671

## NORTHERN IRELAND

### Co. Antrim

Isaac Agnew (Volkswagen Distribution)  
Ltd., 45 Mallusk Road, Newtownabbey,  
Glengormley (023 13) 7111

## SCOTLAND

### Angus

Volksauto, Kirriemuir Road, Forfar  
(0307) 2347

### Ayrshire

Ingram Volkswagen Ltd.,  
18-20 Whittle Place, South Newmoor  
Industrial Estate, Irvine

### Lanarkshire

Merrylee Motors Ltd.,  
512 Kilmarnock Road 041-637 2241

### Midlothian

J. M. Sloan & Co. Ltd., 454 Gorgie Road,  
031-346 1661

## WALES

### Clwyd

Dane Motor Co., Rhosrobin, Wrexham  
(0978) 55777.

### Dyfed

Forge Garage Ltd., Ffosyffin Aberaeron  
(0545) 570291

### Mid Glamorgan

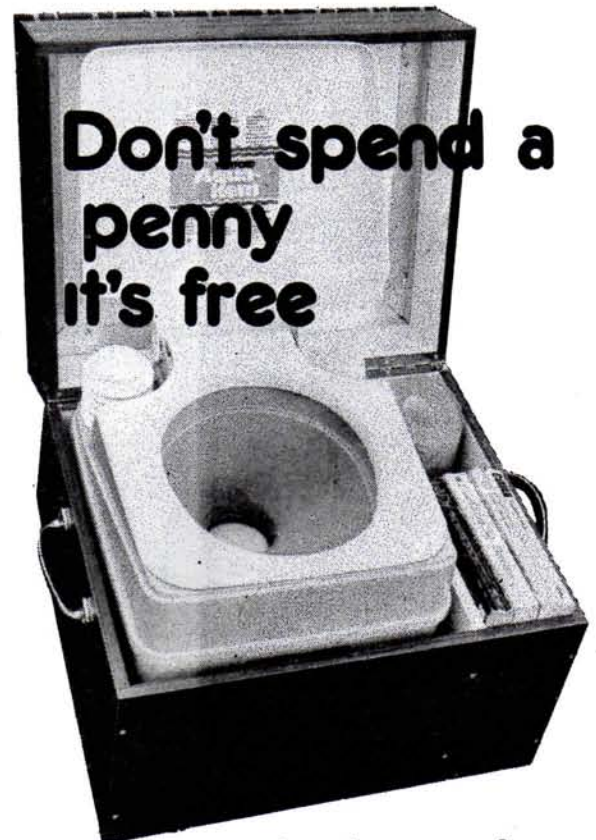
G. Paccitti Ltd., Gerry Hill (Car Sales),  
The Tramway, Hirwaun (0685) 811111  
Tx 497103

### West Glamorgan

Sinclair Garages Ltd., Gorseinon Road,  
Penllergaer, Gorseinon (0792) 894951

### Gwynedd

T. A. Milburn & Son Ltd., Star Garage,  
Isle of Anglesey, Llanfairpwll  
(0248714) 421



from these dealers only