

Instruction Manual for the **Danbury** Volkswagen Transporter



- 1) Introduction
- 2) autoroof
- 3) Travelling
- 3) Bed Layouts
- 4) Eating
- 5) Cooking
- 5) Washing
- 6) Refrigerator
- 7) Electrical Equipment
- 9) Care and Maintenance
- 10) Technical Specification

You are now the proud owner of a Danbury motor caravan, with which we trust you will be truly delighted. The vehicle has, of course, its own owners hand book, which gives full and comprehensive information on the Car side of your new motor caravan and, like this manual, should be read thoroughly in order to gain the most from all aspects of your Danbury.

There are, contained within, certain instructions which must be followed most carefully in order to ensure your own safety and the long life of all component parts, consequently you should make yourself fully conversant with the caravan aspects of your vehicle before using it for a camping holiday.

The Elevating Roof on your vehicle has been designed and developed over a long period of time, and has been intensively tested. Components are, in the main, standard production parts used in other industries and vehicles, and have been proved in their own field over a period of many years.

Your Autoroof is a technically advanced, integral part of your vehicle and requires a little care in use, and a small and simple maintenance procedure, (as detailed in the Care and Maintenance section,) in order that it may serve you reliably throughout the life of the vehicle.

autorooft Operating Procedure

- 1 Always check around and above the vehicle to ensure there is sufficient room to fully elevate your roof.
- 2 Although the drain on the battery by the roof operation is very small it is recommended that the raising and lowering of the roof is done only WHEN THE VEHICLE IS STATIONARY, THE ENGINE IS RUNNING AND A DOOR IS OPEN.
- 3 Unfasten the over centre catch situated on the near side of the interior roof cut out and ensure that the catch will not interfere with the roof.
- 4 Unlock and open the electrics cupboard just forward of the wardrobe on the off side.
- 5 Inside the cupboard is a rocker switch clearly marked Elevating Roof, Up and Down, when the switch is depressed in the up position the roof will elevate to its full height and stop, unless the switch is released.
- 6 When fully elevated the roof will maintain its position unless the switch is operated in reverse.
- 7 The front end of the movable section of the roof bed may now be folded back on itself and lifted slightly to enable it to be slid forward to its stored position over the vehicle cab. There should now be standing room over most of the useable vehicle floor space.
- 8 When lowering the roof the roof bed must be re-located in its 'bed down' position or the roof will not fully close.
- 9 By depressing the roof switch in the down position, the roof will lower itself to the fully down position unless the switch is released.
- 10 By fastening the overcentre catch the roof will be firmly secured for travel.
- 11 Should the roof not fully close, do not continue pressing the down button, but fully elevate the autorooft again and check above the roof beds for any obstructions.

WARNING

UNDER NO CIRCUMSTANCES WHATSOEVER SHOULD THE VEHICLE BE DRIVEN WITH THE ELEVATING ROOF IN ITS ELEVATED POSITION.

WHILST CHILDREN ARE IN THE VEHICLE THE ELECTRICS CUPBOARD SHOULD BE KEPT LOCKED AT ALL TIMES UNLESS THE SWITCHES ARE BEING USED.

THE AUTOROOFT MUST BE FULLY SECURED BEFORE THE VEHICLE IS DRIVEN AWAY.



Danbury Conversions were the first manufacturers of motor caravans to introduce forward facing seats in their conversions and their attention to the comfort of their vehicles for travelling continues to this day.

Preparing the Vehicle for Travel

- 1 The elevating roof must be fully down and secured.
- 2 The table top should be stowed in its proper place over the vehicle cab.
- 3 Gas appliances must be turned off at the appliance and also at the regulator.
- 4 All camping equipment and gear must be properly stored and secured.
- 5 All cupboard lids and doors should be firmly closed.
- 6 The vehicle **MUST** be disconnected from any 240 volt, main electrical supply or the vehicle will not start as it is fitted with a start inhibitor device.
- 7 When passengers are being carried on the seat directly behind the front passenger seat it must be in its fully back, forward facing position, with all catches secured.

Your Danbury motor caravan has ample sleeping accommodation for four adults in its two large double beds. One is situated in the elevating roof and the other in the base of the vehicle to the rear.

Roof Bed

Under no circumstances should any items be stored on the roof bed when the elevating roof is closed.



Eating

Master Bed

The majority of the main bed is situated permanently over the engine compartment of the vehicle, but to make up its full size the rear forward facing settee is used as follows:

- 1 The two outside false door fronts on the face of the rear settee must be opened to be at right angles with the settee.
- 2 Under the front of the base cushion is a handle by which the base cushion must be lifted whilst firm pressure is applied to the top centre of the back rest cushion. The base should come forward and the backrest drop down to complete the bed.
- 3 The seat base should now be supported on the open false doors and fully secure.
- 4 Remove the back rest bar.
- 5 No part of the front sliding seat is used to make up either bed.
- 6 To return the rear settee to its seat position, lift the top edge of the backrest cushion whilst lifting and pushing slightly the front edge of the base cushion.
- 7 Close fully the false door fronts against the settee base and replace the back rest bar.

The dining position allows seating for four around the table, while still permitting access to the cooking facilities.

- 1 The forward facing seat directly behind the front passenger seat operates on runners. Lift the front edge of the hinged crash mat and slide the seat fully forward.
- 2 Release the catches and lift and swivel the back rest so that the seat becomes rearward facing.
- 3 The table's single leg, (a polished steel tube) can normally be found stored in the rear settee locker and must be firmly fitted into the retaining bracket mounted in the vehicle floor.
- 4 The table top itself is stowed over the vehicle cab inside the elevating roof. The centrally mounted boss should be located over the table leg and the top pushed firmly down.



The Lytham Adventurer two burner cooker and grill is a unit which has been used extensively in motor caravans over many years, and has proved most reliable.

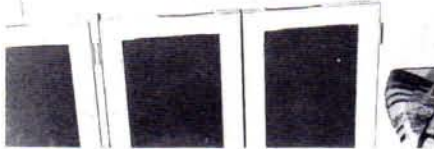
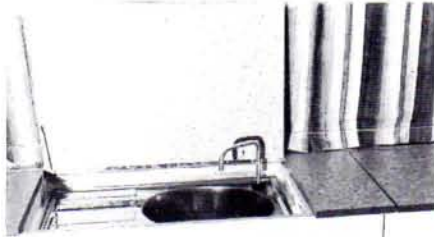


Operating Instructions

- 1 The gas bottle storage for both cooker and fridge is under the fridge and two regulators attached to flexible hoses can be found in that locker.
- 2 Connect the regulator tagged 'cooker' to a Camping Gaz bottle and ensure that it seats down fully and there are no indications of a gas leak.
- 3 Having ensured that all three control switches on the front of the cooker itself are turned to their off position the gas may be turned on at the regulator.
- 4 Each of the burners and the grill may now be ignited as required. There will be a strange smell for the first ten minutes or so of operation while the protective coating on the burners themselves is burned off.
- 5 If you have any reason to suspect a gas leak at any time turn the cooker switches off, turn the regulator off and disconnect the regulator from the bottle. The bottle and appliance should then be checked by a qualified person.
- 6 The vehicle should never be driven with the cooker in use, or the gas supply to the cooker switched on.

- 1 The water system in your Danbury is a cold water only system with the water supply contained in three two gallon water carriers; giving a total capacity of six gallons with the ability to take a container to the main water supply.
- 2 Having filled the bottles with water, two of them may be stored in the cupboard under the sink. One of which should have fitted the screw cap with the grommet through which the loose input water hose should be pushed until it reaches the bottom of the water carrier.
- 3 The fold away, foot operated pump lever may be folded forward into the vehicle, though it will be necessary to depress the lever slightly to close the cupboard door securely.
- 4 The top opening wash basin unit is fitted with a stainless steel sink and telescopic faucet which may be pulled up when the unit is open, but must be fully down before the lid is closed.
- 5 By simply depressing and releasing the foot pedal, water will be supplied to the sink via the faucet by the double stroke, self priming pump.
- 6 Waste water is carried away via the outlet hose through the floor of the vehicle on the off side where a bucket may be placed to collect it for disposal.

Refrigerator



Your Danbury is fitted as standard with a BOB 35 L chest refrigerator. This unit from Italy has been chosen for its excellent compactness, with a full 35 litre capacity. Another advantage being that the top opening characteristic of the fridge requires less space than a hinged door model.

This unit operates from 240 volt mains electrics, 12 volt vehicle electrics and bottled gas supply (Camping Gaz).

Operating from Mains 240 Volt

- 1 Ensure that the fridge is disconnected from the gas supply.
- 2 The vehicle must be connected to a mains electrical supply, via the slide covered socket, situated over the rear off side wheel arch. (When connected the vehicle engine will not start.)
- 3 Inside the lockable electrics cupboard, you will find a toggle switch clearly marked Refrigerator, 240 volt, off, and 12 volt. Switch to the 240 volt position and the fridge will start to operate.



Operating from 12 Volt

- 1 The 12 volt electrical operation of the refrigerator is for use only when the vehicle is in motion or the motor is running. When the toggle switch in the electrics cupboard is pushed to the 12 volt position the refrigerator will start to operate. It will not work when the ignition is switched off nor should any attempt be made to make it do so.
- 2 Whenever the vehicle is in motion the fridge must be disconnected from its gas supply.

Refrigerator



Operating from L.P.G. Supply (Camping Gaz)

- 1 Never operate the fridge on gas when the vehicle is in motion.
- 2 Ensure that the refrigerator switch in the lockable electrical cupboard is in the off position, thus preventing any electrical operation of the unit.
- 3 Connect the regulator in the gas bottle storage cupboard under the fridge to a camping gaz bottle, ensuring that it seats down securely and switch on the supply.
- 4 With as little delay as possible operate both the flame failure and the piezo ignition button situated on the left side of the fridge itself at the bottom. The fridge should ignite and start working.
- 5 If the refrigerator should fail to ignite on the first attempt, continue depressing the failure device for a few seconds before operating the ignition switch again.
- 6 Never move or drive the vehicle when the fridge is running on or connected to the gas supply.
- 7 Though the refrigerator is correctly ventilated and flued, it is recommended that a vehicle window is partially opened when the fridge is being run on gas.
- 8 Always park the vehicle as evenly as possible to enable the refrigerator to work most effectively.

Electrical Equipment

Your new Danbury motor caravan is extensively equipped with electrical items to make your holidays as easy as possible. The items used have all proved reliable over a period of many years, and should provide trouble free service.

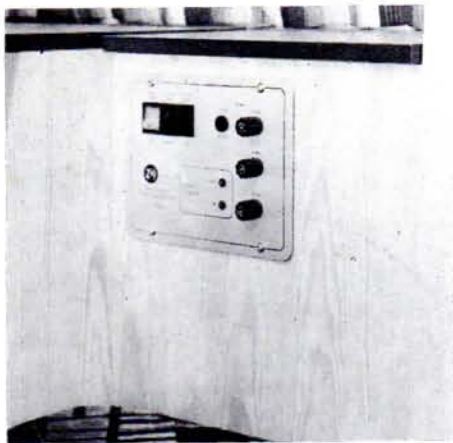


240 Volt Mains Inlet Socket

The mains inlet socket and plug are quite simply a means to transfer the electrical fittings within the vehicle to a steady, constant and reliable source of power. A lead may be made up so that any power source can be plugged into the vehicle providing it operates on 240 volts.

Charge and Distribution Unit

This remarkable unit is situated in the face of the electrical cupboard and is the centre for all circuitry within the caravan side of the vehicle.



1 Charge Unit

When the vehicle is plugged into the mains supply this unit can be used to trickle charge the battery without doing anything other than operate the switches marked mains, and charging car.

2 Battery Condition Indicator

WHEN the vehicle is not connected to the mains or the mains is switched off, by switching the 12 volt switch to on position one or other of the battery condition lights will illuminate showing either normal or low battery condition. If low is shown we recommend that the battery is re-charged immediately.

3 Main Purposes

This unit contains a versatile dual purpose system. Firstly it gives a safe distribution point for all the low voltage electrical appliances and secondly, it enables you to re-charge your battery from the mains.

You can use the low voltage circuits while the charger is working, or you can leave it unattended. Either way, the unit is fully protected with fuses and automatic cut outs which protect your electrical system from overload.

Fluorescent Lights

There are three fluorescent lights wired in two circuits through the distribution unit.

Each light has an individual switch, but none will light until the switch marked 12 volt is switched on at the C & D unit.

Being dual circuit should one fuse blow, there will still be light with which to replace it.

Television Socket

Situated at the rear of the top of the electrical cupboard is a television socket with plug, supplying 12 volts via the distribution unit.

Refrigerator

See refrigerator section No. 8.

Elevating roof electrics

See Elevating Roof section 2.

The wiring of the caravan in your Danbury is entirely separate from the vehicle circuits, and failure in one should in no way affect the other.

The vehicle is fitted with a start inhibitor which will prevent the engine being started when the 240 volt supply is connected.

Care and Maintenance



Exterior

The elevating roof is constructed from glass reinforced plastic which is similar in finish to the body paintwork, and should be washed regularly and may be polished with the rest of the vehicle.

Interior

Upholstery

This very durable fabric may be wiped clean with a damp cloth.

Curtains

It is recommended that curtains be dry-cleaned when necessary.

Furniture top surfaces

All furniture top surfaces are Waverite plastic laminate and may be cleaned with a mild detergent – DO NOT SCOUR.

Wooden Surfaces

All wooden surfaces are sprayed with Melamine and may be wiped clean with a damp cloth, or polished with normal domestic furniture polish.

Cooker and Sink

Both these components are stainless steel and should not be scoured.

Water bottles

We recommend that these are kept empty – unless in use for camping, and when in use a small quantity of Milton or similar fluid may be added to the water from time to time.

Elevating Roof

Periodically the elevating roof should be raised, the striped fabric walls washed carefully with mild detergent, outside and in. Grease should be applied to the aluminium tracks at the front and rear.



WE ARE CONFIDENT THAT YOU WILL HAVE NO CAUSE FOR COMPLAINT WITH YOUR DANBURY CONVERSION – BUT SHOULD YOU HAVE ANY QUERIES WHATSOEVER – PLEASE CONTACT YOUR SUPPLYING DEALER AND OUR TECHNICAL DEPARTMENT AS SOON AS POSSIBLE

Please ensure that you complete fully the pre-paid purchase registration form at the end of this manual in order that any conversion queries that may arise may be dealt with quickly and efficiently.

Technical Specification

Engine:

Air-cooled, four cylinder, four stroke, horizontally opposed, rear mounted, petrol.

	1600 cc	2000 cc
Bore	85.5mm	94.0mm
Stroke	69.0mm	71.0mm
Cubic capacity	1584 cc	1970 cc
Compression ratio	7.5:1	7.3:1
Output – S.A.E. net	48 bhp	67 bhp
At rpm	3800/min	4200/min
Fuel rating (RON)	91	91
Down-draught carburettor (twin on 2.0 litre version) with automatic choke.		

Electrical System:

Battery 12 V/45 Ah; negative earth
Alternator 45 Ah

Transmission:

Manual – Full baulk synchronised four-speed gearbox, differential and double-jointed drive shafts to rear wheels.
Automatic option (2.0 litre only) – Hydrodynamic torque converter and automatic three-speed epicyclic gearing.

Suspension:

Independent all round.
Front Double wishbones, progressive coil springs with telescopic shock absorbers, Anti-roll bar.
Rear Semi-trailing arm rear axle, miniblock springs with telescopic shock absorbers.

External Dimensions:

Track – front and rear	61.8in
Wheelbase	96.8in
Length	179.9in
Width	72.6in
Height	82.0in

Steering:

Rack and pinion.
Track-stabilising neutral steering roll radius.

Brakes:

Dual circuit brake system with discs in front and automatic self-adjusting drums in the rear. Load sensitive brake pressure regulator (vacuum-operated brake servo unit on 2.0 litre version).

Towing Capacities

	1600 cc	2000 cc	Auto.
Permissible trailer weight (braked)	2205 lb	2645 lb	1764 lb
(unbraked)	1323 lb	1323 lb	
Maximum nose weight	110 lb	110 lb	110 lb

Note: Towing with automatic models only possible with factory fitted towing bracket. Maximum gradient 16%.

NOTES

Danbury Volkswagen Series II PURCHASE REGISTRATION FORM

To ensure that if any Conversion queries that may arise are dealt with quickly and efficiently, please complete this section in capital letters, detach and post to Danbury Conversions. No stamp required.

PURCHASER'S NAME

AND ADDRESS

.....Tel No

PLACE OF PURCHASE

.....

DATE OF PURCHASE

VEHICLE REGISTRATION No CHASSIS No

Postage
will be
paid by
licensee

Do not affix Postage Stamps if posted in
Gt. Britain, Channel Islands or N. Ireland

BUSINESS REPLY SERVICE
Licence No. CL661

Danbury Conversions Ltd
Main Road
Danbury
Essex CM3 4BR

21

NOTES

Danbury Conversions Ltd · Main Road · Danbury · Essex · Telephone Danbury (0245 41)2224/5/6/7

www.vwT25camper.info - a useful website for owners and enthusiasts of VW T25 / T3 Campervans

2017/ETD/100